

# IPCAM

## Quick Installation Guide

Version 1.04



June 2008, Judes Shao

DSIViewer Version : 1.4.3.0

IPVAD Server Version : 2.5.2

Image Version : IPCam-1001-2021

## PACKAGE CONTENTS:

Package content includes follows:

It's grateful for you to use our product, if there is any defect, please connect with supplier as soon as possible.

1. IPCAM
2. Installation Disk
3. Quick Installation Guide
4. Power Supply Adapter
5. Camera Stand with screws
6. Mounting Bracket
7. Cat 5 Ethernet Cable
8. Antenna(ONLY for wireless IPCAM)



IPCAM (Front Panel)



IPCAM (Rear Panel)

## MINIMUM SYSTEM REQUIREMENTT:

1. CPU: Pentium III 1 GHz or above
2. Memory: At least 256MB
3. System: Microsoft® Windows® XP, 2000 or above
4. Browser: Microsoft® Internet Explorer 5.0 or above, Microsoft® Internet Explorer 6.0 is better.

## **PREPARATION FOR INSTALLATION:**

Please carefully read quick installation guide to get familiar with IPCAM's functions and structure features. Prepare a long ethernet cable to link with network. Power adapter is around 1.5 meter, ensure it's long enough to link to power plunge.

## **HARDWARE INSTALLATION:**

This chapter introduces how to finish hardware installation and physical link. After that, IPCAM starts up with link of power supplier, at that time indicator light is on persistently.

- 1 Camera Installation:
- 2 One endpoint towards the screw socket, rotate light, then Camera Stand, and Mounting Bracket together.
- 3 Another point towards the camera's bottom groove, rotate clockwise and fix the camera on shelf as Picture 1.
- 4 Setup camera's direction and fix IPCAM in right position.



**Picture 1**

## 5 Link with Internet

IPCAM should link to 10/100M hub, switch or any other Ethernet equipment. Put one crystal head into Ethernet interface at the stern, another one into router or switch. The former interface will glow if link is right.



**Note!**

1. Ensure net cable less than 100 meters. Please use signal amplifier if longer
2. Please use provided power supply adapter, others causes hardware damage.
3. Ensure Ethernet cable is no-modem mode while PC and IPCAM link directly.

## 6 Link with power supplier

Plug power adapter output into IPCAM, and switch it on (picture 2).

✖ **Suggestion:** Make sure using the adapter in package, otherwise it will cause some hardware damage.



**Picture 2**

## 7 Checking LED Light

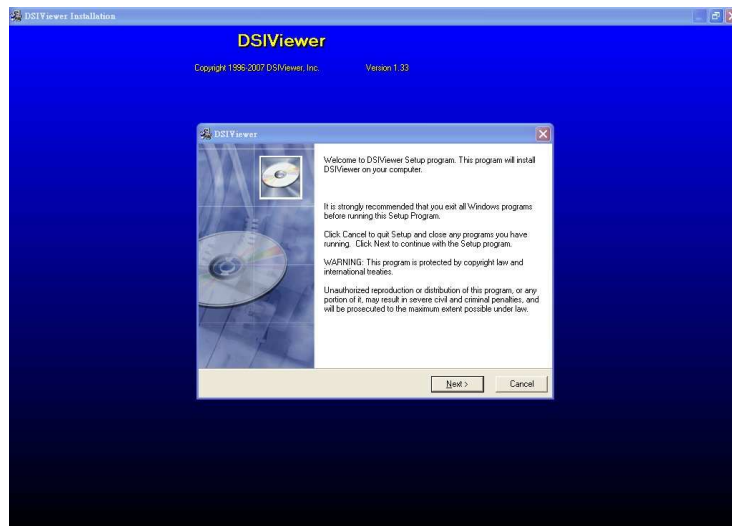
**While power on, Camera starts and the yellow light at the stern will persistently glow.**

## SOFTWARE INSTALLATION:

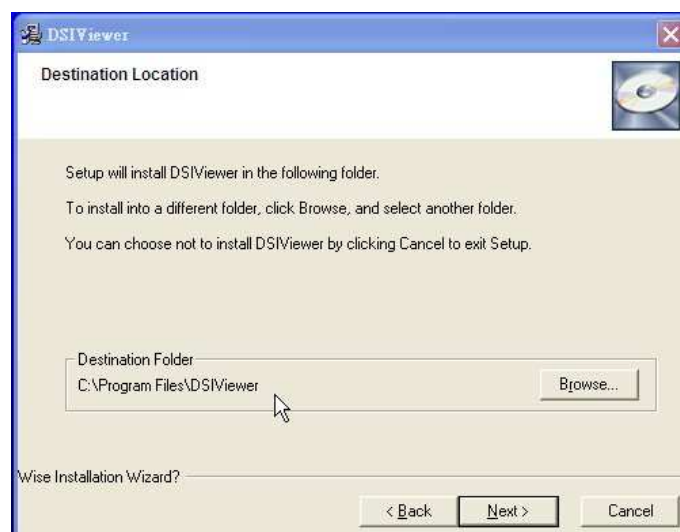
Initial installation should be programmable by **DSIViewer** in disk, after software installation, DSIViewer can search for all IP addresses on net automatically, then view and set it on LAN.

1. Put the CD into computer driver, and then installation system will run automatically. If not, open the disk and double click "**Setup.exe**", you will see **welcome** interface

2. Then appears **DSIViewer** introduction as Picture 3 and click **【Next】** after quick skip to finish installation



Picture 3: Interface



picture 4: Path choice

3. Wizard helps user finish installation, and experienced user can click “Browse”, select installation path as Picture 4 and then click **Next** gradually.

4. When Picture 5 appears, click **Finish** to complete installation. Interface ejects automatically by program and user can see image after simple set.

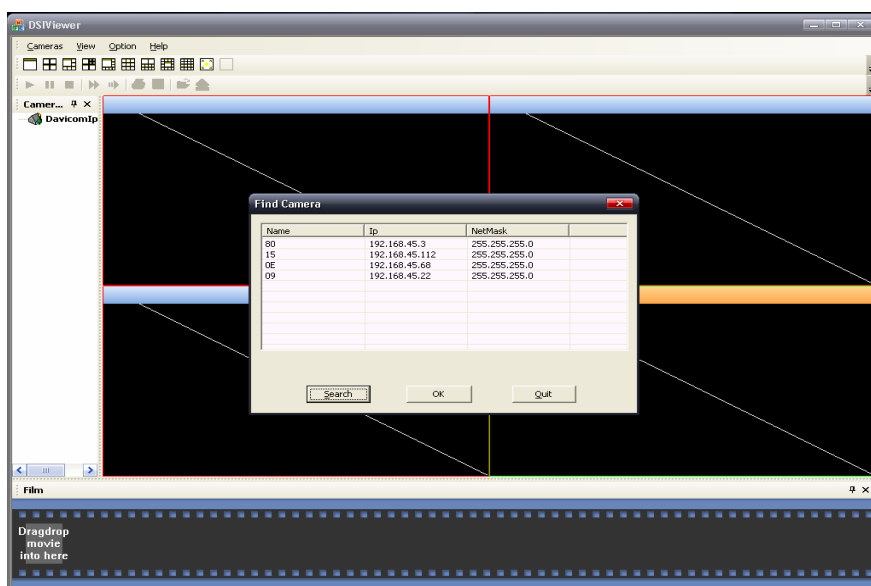


Picture 5

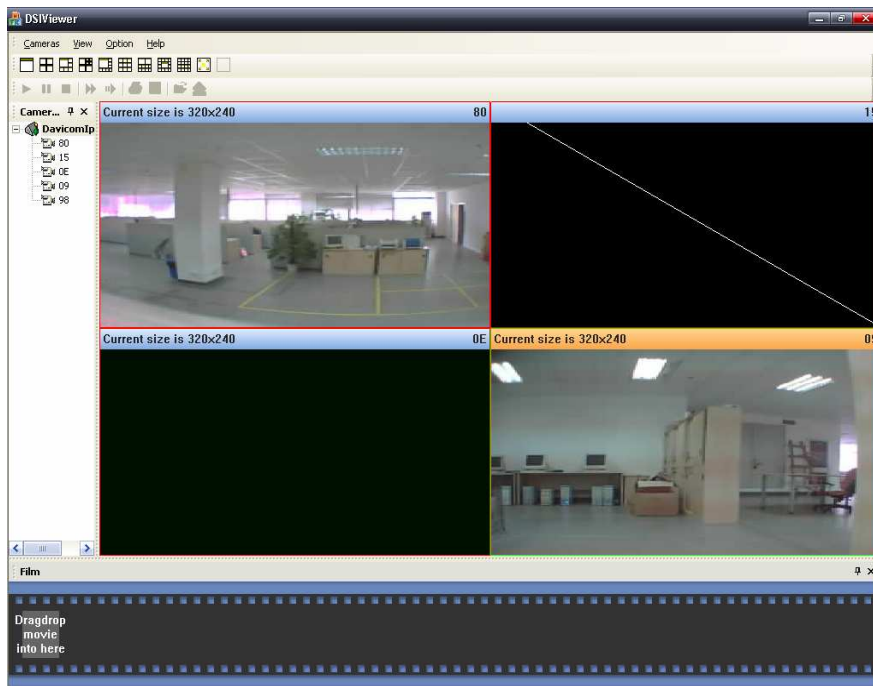
5. Program can run automatically after installation. Click **Find Camera** in **Camera** and then it pop on. Program searches for all IPCAM information, please wait for 5-10 seconds; interface will display all as Picture 6.

6. Click “OK” and then image displays as Picture 7. If users change administrator’s name and password, please input new one in ejected interface.

7. Install Adobe Reader and JRE 6.0 in disk.



Picture 6: *Find Camera* interface



Picture 7: **System** function

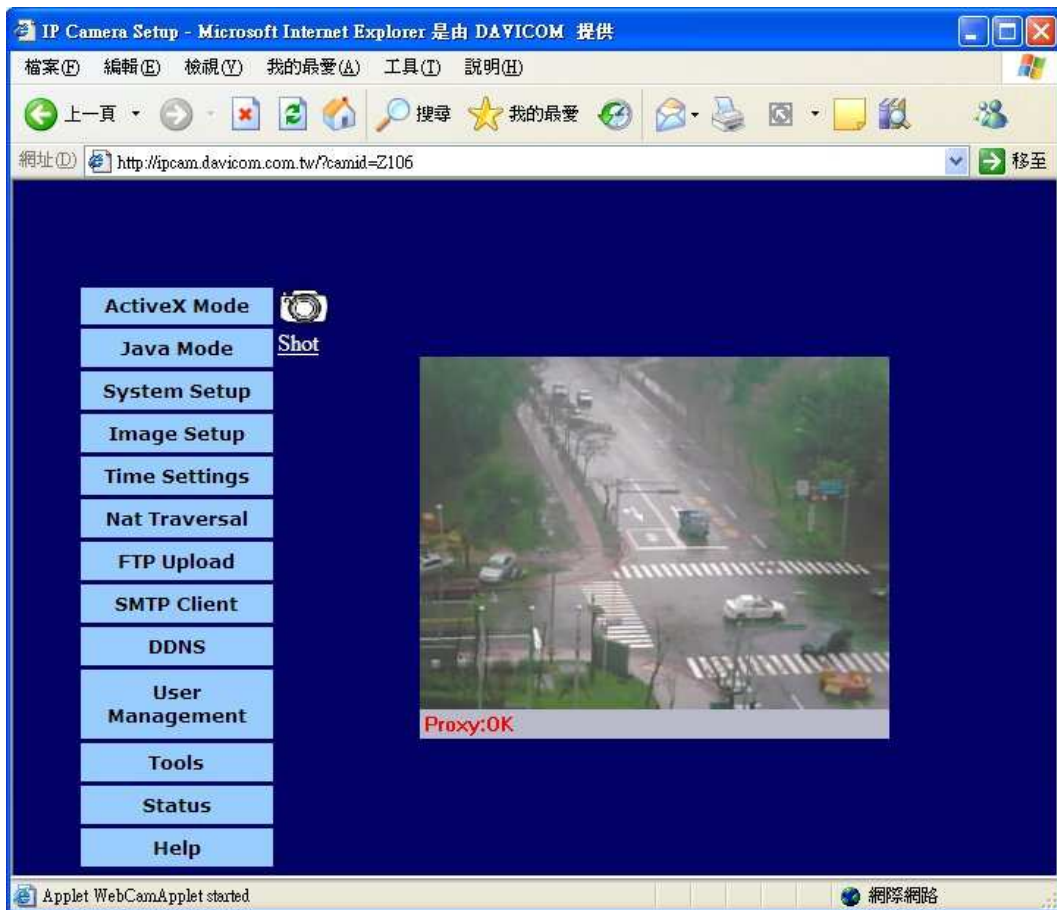
## VIEW THROUGH BROWSER

IP address on LAN enables browser login IPCAM's Web interface. If on Internet, so as all public net IP addresses for IPCAM and TCP port mapping.

Input IP Address on browser bar, press “**Enter**” and login, then IPCAM image interface is on as Picture 8. Default mode is **ActiveX Mode** that plug-in should install for first time. If browser bans for this, user should click “**allow to install Active plug-in**”. It also supports by **Java mode**, JRE 6.0 in disk should install. If by manual, browser can download it automatically from Internet.

**ActiveX Mode** suggests.

On left side of Picture 8 is choice button for functions that help users setup IPCAM. On right side is display area that depends on left choice buttons. The left side of picture describes in later part.



Picture 8 *View*



Warning:

Please change administrator password for first time under TOOL interface.

- i. If user forgets password, press and hold “reset” at the stern of machine for 10 seconds. IPCAM can restore factory setup parameter.
- ii. After restart, please change IPCAM system time on Sntp interface. User can check time and other condition on Status interface

User Name : admin

Initial Password: 123456